




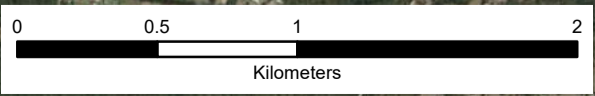
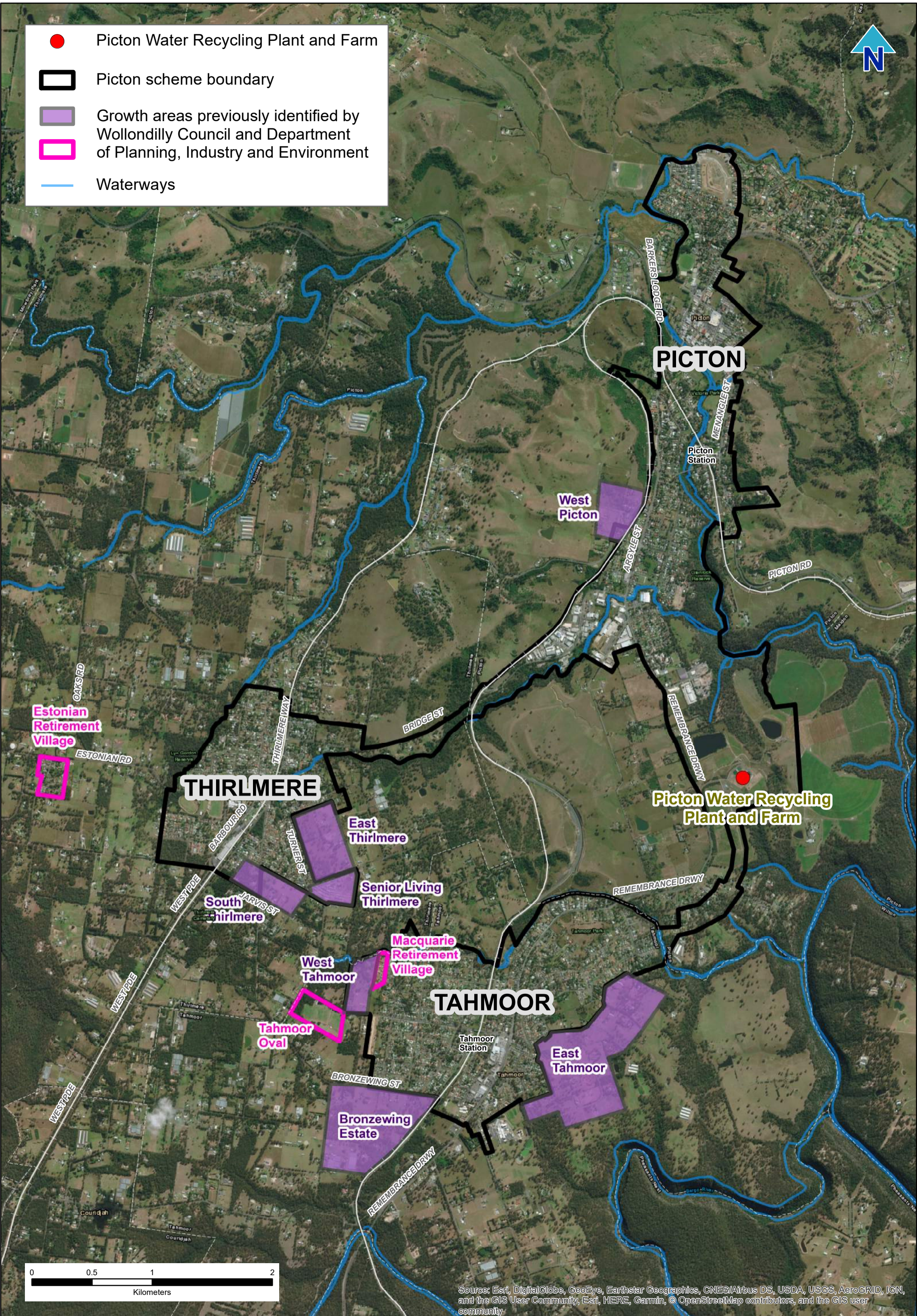




-  Picton Water Recycling Plant and Farm
-  Picton scheme boundary
-  Growth areas previously identified by Wollondilly Council and Department of Planning, Industry and Environment
-  Growth areas previously identified by Wollondilly Council and Department of Planning, Industry and Environment
-  Waterways



Source: Esri, DigitalGlobe, GeoEye, Earthstar Geographics, CNES/Airbus DS, USDA, USGS, AeroGRID, IGN, and the GIS User Community, Esri, HERE, Garmin, © OpenStreetMap contributors, and the GIS user community